



Cofinanziato dall'Unione europea

Erasmus+ Project
« Boost your English »
First activity with students

TEACHER MANSI



Erasmus+

**IND
IRE** ISTITUTO
NAZIONALE
DOCUMENTAZIONE
INNOVAZIONE
RICERCA EDUCATIVA



LET'S PRESENT....

ANCIENT
EGYPT!!

CLASS I'B, MONTANO
LUCINO,



**Un viaggio alla scoperta dell'antico Egitto con delle guide d'eccellenza:
gli studenti della I^B di Montano Lucino!**

Indossando i panni dell'archeologo e dello storico dell'arte, i ragazzi hanno spiegato, rigorosamente in lingua inglese, alcuni dei capolavori artistici dell'antico Egitto attraverso magnifici lap book! Siete curiosi?!



Let's discover ancient egypt!



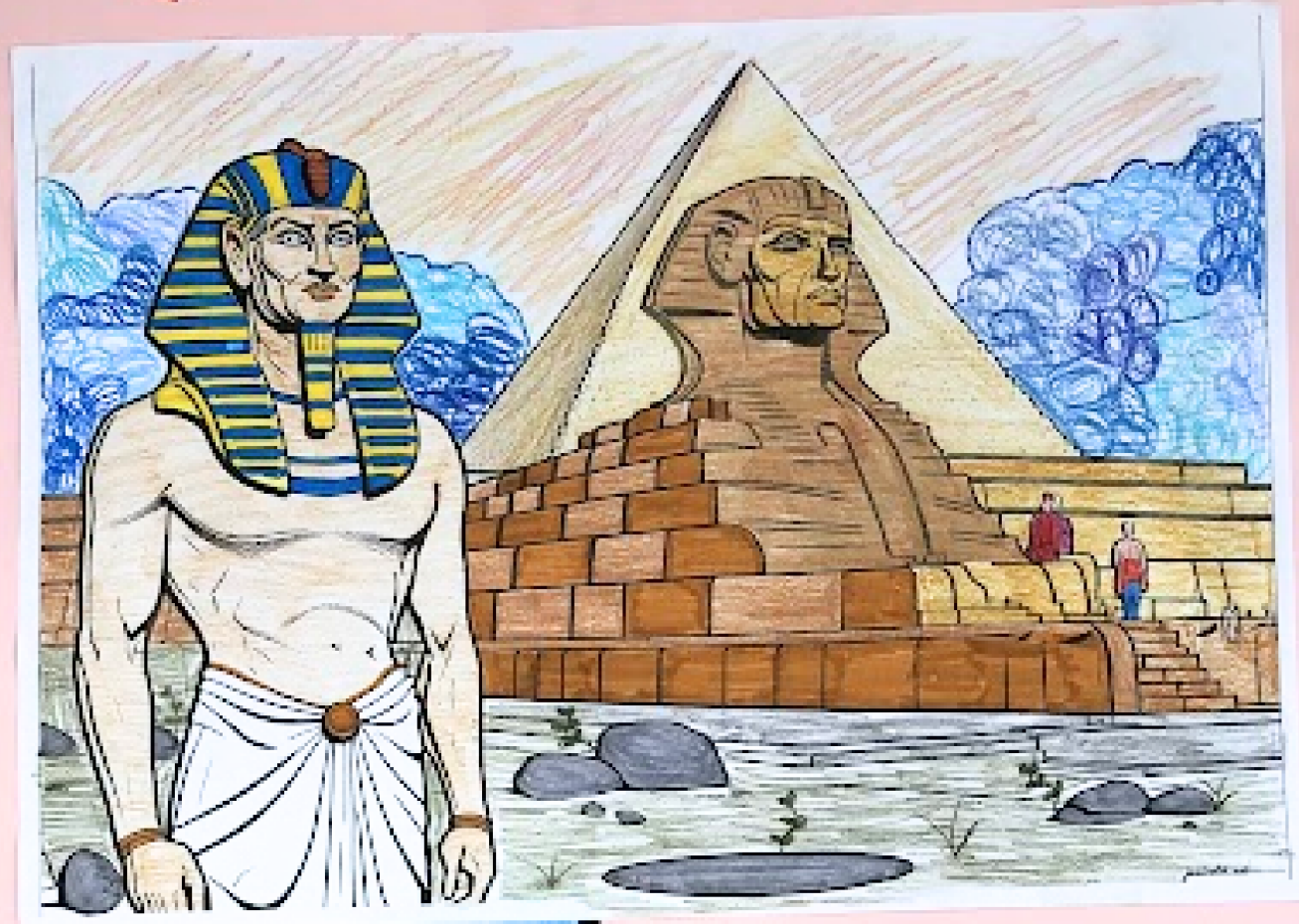
THE STORY OF...

LET'S
TALK
ABOUT..

SPHINX

By ALE-RACHY-IRE-CRI

The sphinx measures
22 m in length and
20 m in height. Some elements
of the face are missing, the
nose, the beard and the
extra stress elements
etc. now in the British
Museum.



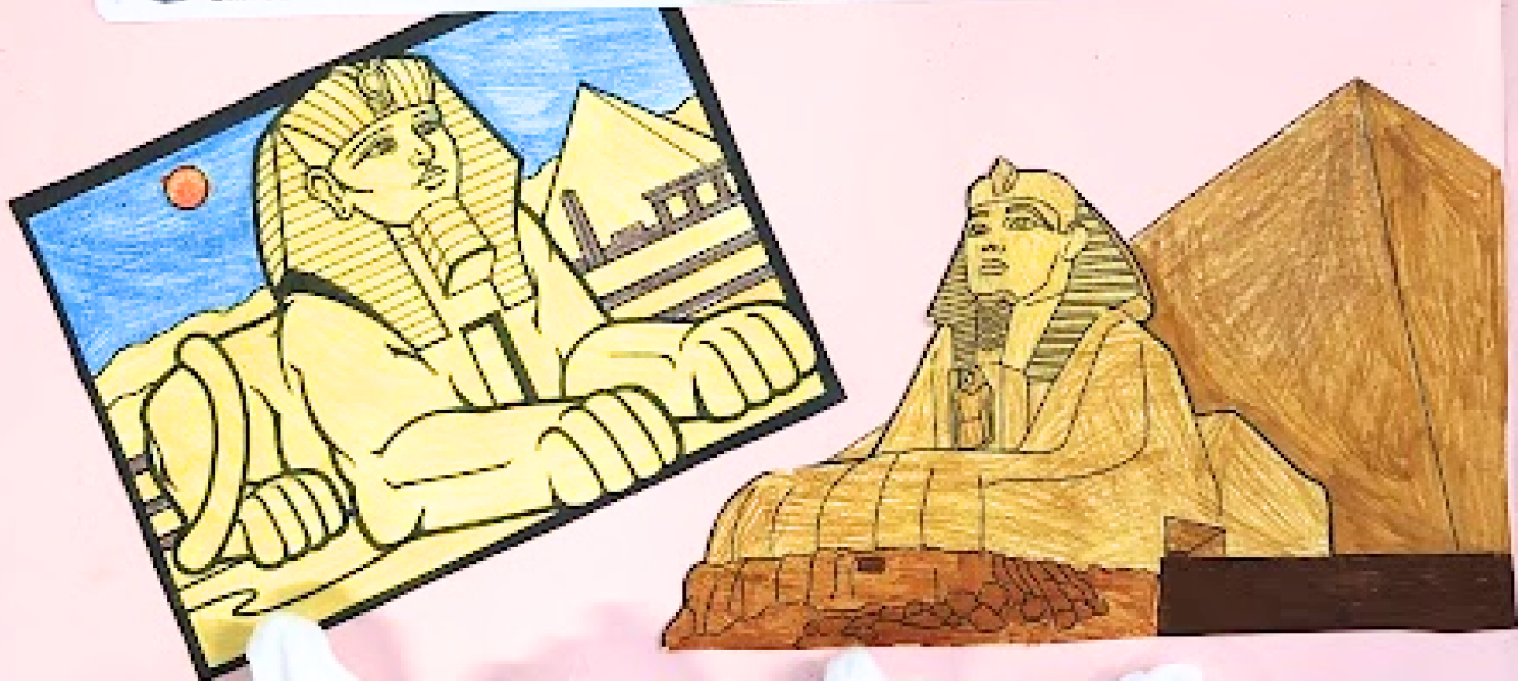
Ancient Egyptians made
many large statues of
sphinxes. The city of Luxor
has a street lined with
sphinxes. The largest one is
found in Egypt. Sphinxes
were placed near the entrance
of Egypt to protect the
king. The great sphinx is the
head of an Egyptian king.

THE SPHINX IS A CREATURE
IN MYTHOLOGY. IT HAS THE BODY
OF A LION AND THE HEAD OF
A HORSE. SPHINXES APPEAR IN
THE ART AND LEGENDS OF ANCIENT
EGYPT AND ANCIENT GREECE.

THE SPHINX WAS
PAINTED IN RED, ITS PAINTS
CONTINUED TO STAIN THE
SURFACES.

CURIOSITY

Did You
Know?



CURIOSITY

WHAT HAPPENED
TO THE SPHINX'S
NOSE?

THE SPHINX IS A CREATURE
IN MYTHOLOGY. IT HAS THE BODY
OF A LION AND THE HEAD OF
A HUMAN.

The sphinx measures
73.5 m in length and
20 m height. Some elements
of the face are missing: the
nose, the beard and the
cobra. (These elements
are now in the British
Museum)



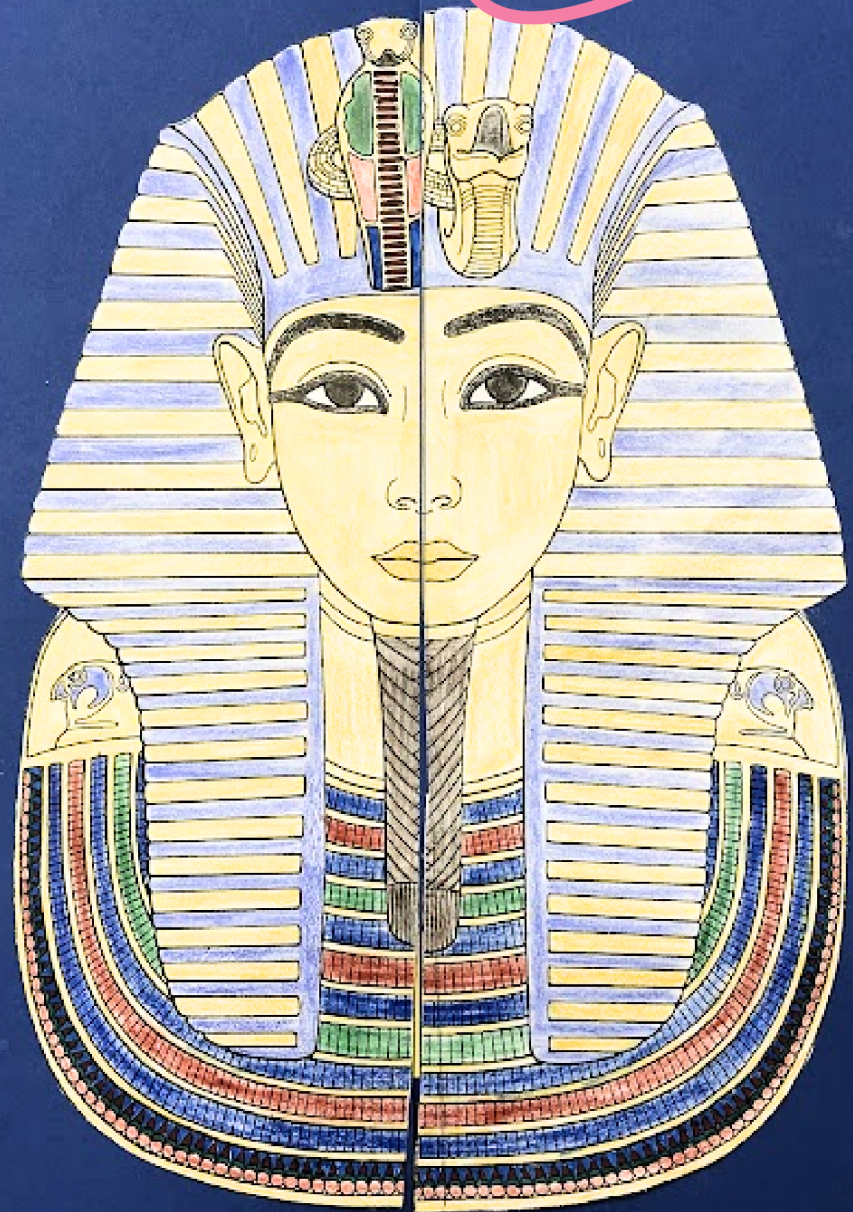
The nose was
damaged in the
10TH century from
an arab man
for vandalism.

TY

WHAT HAPPENED
TO THE SPHINX'S
NOSE?

THE SPHINX'S FACE WAS
PAINTED DARK RED, ITS PAWS
CONTAINED DOZENS OF
HIEROGLYPHICS

TUTANKHAMUN'S TOMB



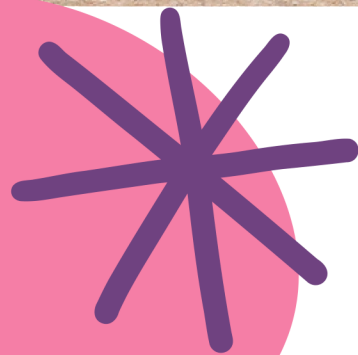
THE TOMB

HIS GOLDEN COFFIN WAS BURIED IN A TOMB IN THE VALLEY OF THE KINGS, SURROUNDED BY 5,000 PRICELESS TREASURES.

THESE TREASURES INCLUDED A GOLDEN THRONE, CROWN AND COBRA, POTTERY AND BIG CHESTS LIKE ONE PICTURED HERE...

CURIOSITY

King Tutankhamun was nicknamed Boy King because he began his reign when he was only nine years old!



HAVE YOU EVER
HEARD OF THE
TUTANKHAMUN
CURSE??



**THE COIN OF
TUTANKHAMUN**

The Throne

PHARAOH'S CURSE

"Pharaoh's curse" says that his death shall come on swift wings to him who disturbs the peace of the King. The curse of the pharaoh is believed to cause death, illness or bad luck to anyone who disturbs a mummy or pharaoh's tomb!

THE TOMB

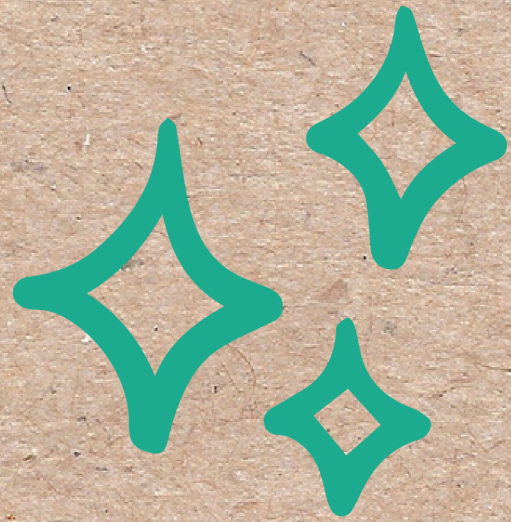
The golden coffin was buried in a tomb in the Valley of the Kings, surrounded by 5,000 gold leaf-covered treasures. These treasures included a golden throne, crown, and sandals. Pottery has also been found in the tomb.

CURIOSITY

King Tutankhamun was nicknamed "Boy King" because he began his reign when he was only nine years old!

THE LIFE

Name: His name means "living image of Amen", the Egyptian god of the air.
How tall is Tut: He was 149 cm tall.
Death: King Tut died at age 18. There is a small bone fragment on the inside of his skull that initially led some historians to believe THAT!



THE PYRAMIDS ARE THE STONE TOMBS OF EGYPT'S
KINGS THE PHARAONS AND ONE OF THE
WORLD'S GREATEST HISTORICAL HISTERIES.

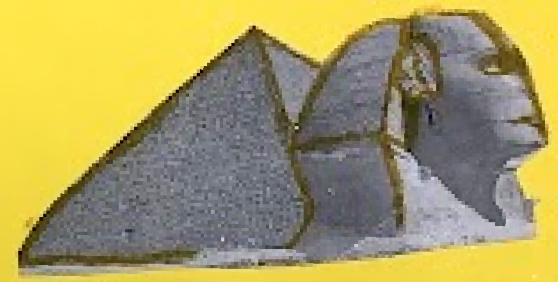


EGYPTIANS PIRAMIDS



WHAT ARE PYRAMIDS?

THE PYRAMIDS ARE THE GREAT TOMBS OF EGYPT'S
KINGS THE PHARAOHS AND ONE OF THE
WORLD'S GREATEST HISTORICAL MONUMENTS.



WHAT GUARDS THE PYRAMIDS?

THE EGYPTIAN SNAKES INSTEAD OF ALL THE PYRAMIDS
IN EGYPT. IT HAS THE BODY OF A SNAKE AND THE HEAD
OF A PHARAOH.

WHY DID THEY BUILD PYRAMIDS NEXT TO THE NILE?

THE REASON THEY BUILT THE PYRAMIDS NEXT
TO THE NILE RIVER WAS SO IT WOULD
BE EASIER TO GET THE BLOCKS TO
THE PYRAMIDS!

WHERE WERE THEY BUILT?

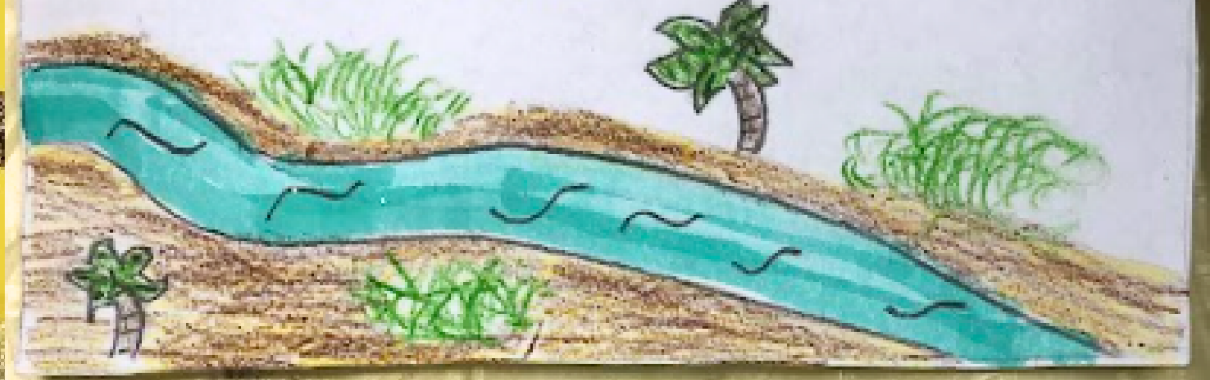
MOST OF THE PYRAMIDS CAN BE FOUND ON
THE WESTERN SIDE OF THE NILE RIVER, JUST
IN TO THE DRY DESERT



WHY DID THE ANCIENT EGYPTIANS BUILD PYRAMIDS?

THE EGYPTIANS BELIEVED THAT IF THE PHARAOH'S
BODY COULD BE MUMMIFIED AFTER DEATH THE
PHARAOH WOULD LIVE FOREVER! THE TOMBS WERE
DESIGNED TO PROTECT THE PHARAOH'S BODY AND
HIS TREASURES.

MOST OF THE PYRAMIDS CAN BE FOUND ON
THE WESTERN SIDE OF THE NILE RIVER, JUST
IN TO THE DRY DESERT



THE EGYPTIANS BELIEVED THAT IF THE PHARAOH'S
BODY COULD BE MUMMIFIED AFTER DEATH THE
PHARAOH WOULD LIVE FOREVER. THE TOMBS WERE
DESIGNED TO PROTECT THE PHARAOH'S BODY AND
HIS TREASURES.



NEBAMUN'S TOMB!



WHO IS NEBAMUN?

HE WAS A SCRIBE AND GRAIN ACCOUNT. HIS TOMB WAS LOCATED AT THEBES, NEAR THE NILE.

THE ANCIENT EGYPTIAN

THE ANCIENT EGYPTIAN ENVIRONMENT WAS FULL OF WILD ANIMALS. IN ANCIENT EGYPT PEOPLE KEPT A NUMBER OF ANIMALS AS COMPANIONS AND AS FARMING ANIMALS.



THE WALL PAINTINGS

THIS WALL PAINTINGS SHOWS NEBAMUN HUNTING WILD BIRDS IN THE RIVER NILE.

THE PAINTINGS

THE PAINTINGS AND OBJECTS IN THIS GALLERY PROVIDE A LOT OF INFORMATION ABOUT WHAT PEOPLE WORE IN ANCIENT EGYPT. MEN AND CHILDREN WORE SEWELLAY IN ANCIENT EGYPT. CLOTHES FOR WOMEN AND MEN WERE MADE FROM WHITE LINEN CLOTH.



ABU SIMBEL'S TEMPLE

The main temple was dedicated to two sun gods. The inside of the temple is made up of three halls. Statues and wall paintings describe the life. The smaller temple was built for Nefertari. It was dedicated to Hathor who was the goddess of the sky, women, motherhood and love.



THE TEMPLE'S LEGEND

A legend says that Queen Nefertari died at the entrance to the great temple while she almost certainly died before the completion of the temple dedicated to her.

Abu Simbel is the site of two ancient Egyptian Temples. The site is located on the Nile River in southern Egypt.



Curiosity about the temple of Ramses II



Chiara, Filippo, Marco e Sofia

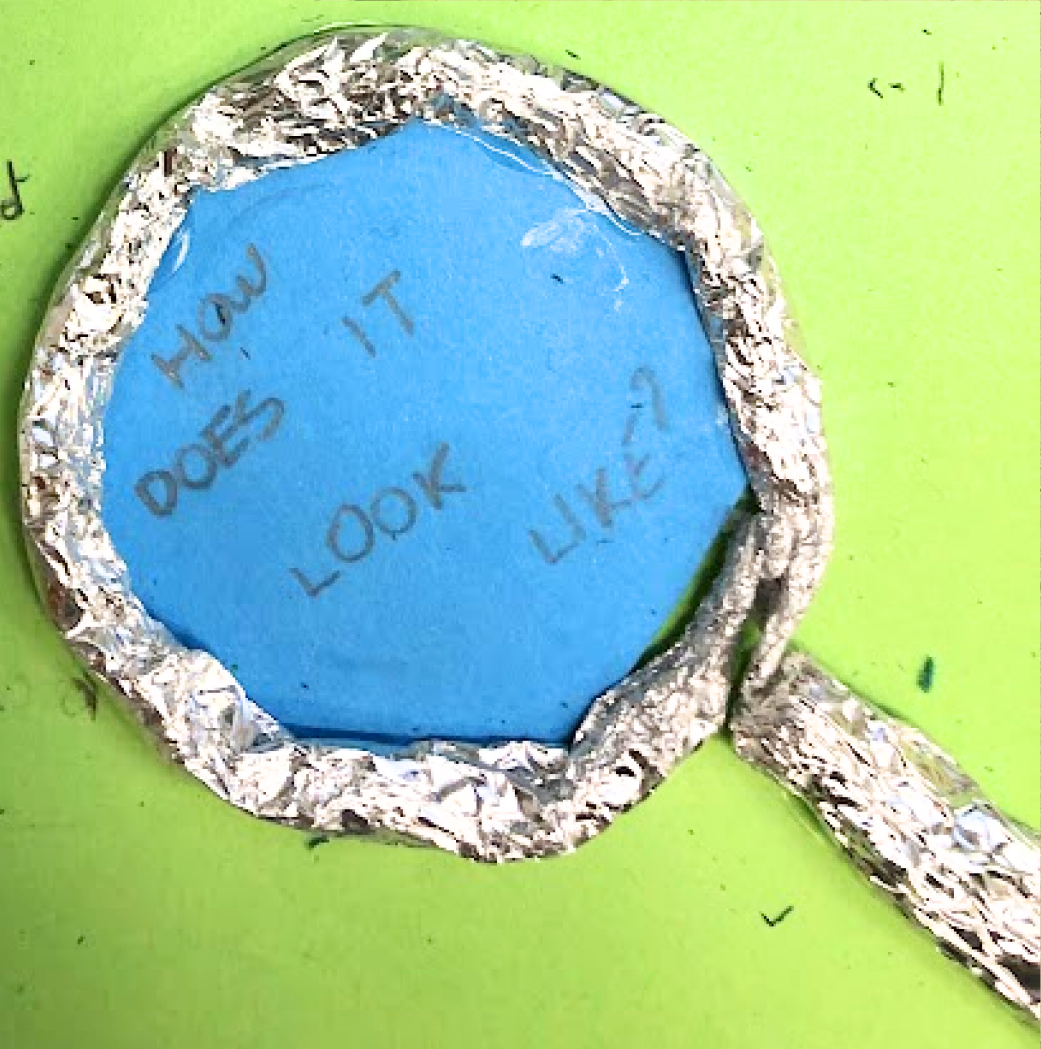
FASHION

PAINTING

PAINTING

The main temple was dedicated to two sun gods. The inside of the temple is made up of three halls. Statues and wall paintings decorate the halls. The smaller temple was built for Nefertari.

It was dedicated to Hathor who was the goddess of the sky, women, motherhood and love.





WELL
DONE!

